

# **ENGINEERING: A KEY PROFESSION IN MEDICINE AND HEALTHCARE**

**Institution of  
MECHANICAL  
ENGINEERS**

Medical Engineering, also known as Bioengineering or Biomedical Engineering is a diverse, exciting and relatively new area within the field of engineering.

The discipline spans a whole range of activities, integrating professional engineering with medical knowledge of the human body. Examples of work in this area are hip replacements, pacemakers, computer simulations, artificial limbs, rehabilitation devices and robotic surgery. The field is rapidly evolving; there is a huge need for engineering input and there are excellent job prospects for graduates. Employment can be found within companies working on the design, development and manufacture of medical devices, in hospitals looking at providing non-clinical services, with government regulatory agencies and government or academic research facilities.

The aim of the Engineering in Medicine and Health Division is to bring together key workers from both medicine and engineering to discuss the latest advances and issues, to enable networking among different industry leaders, and to promote this growing field to government, healthcare professionals and the wider public.

## **We offer:**

- **seminars, lectures** and **conferences** every year
- the high-profile '**Journal of Engineering in Medicine**'
- the brand new '**Journal of Sports Engineering and Technology**'
- a quarterly **Medical Newsletter**
- the highly successful annual **Student Project Competition**

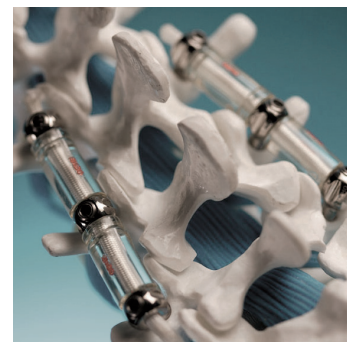
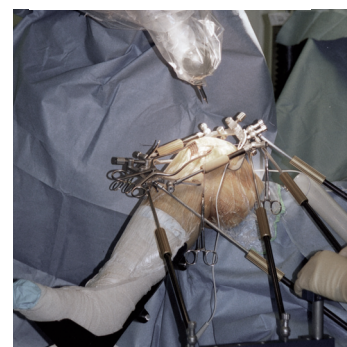
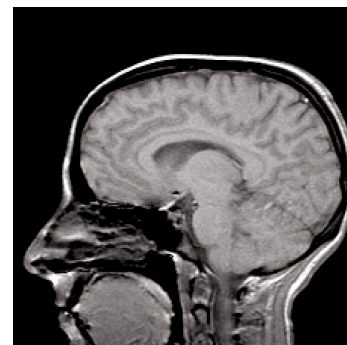
To find out more, visit [www.imeche.org/industries/medical](http://www.imeche.org/industries/medical)

Please email your enquires to [medical@imeche.org](mailto:medical@imeche.org)

Alternatively, you can telephone:

Amy Hurlstone on + 44 (0)20 7304 6829

Diane Lorenzelli on +44 (0)20 7304 6966



# HOW TO GET INVOLVED

**There are plenty of opportunities to get involved in Medical Engineering.  
Here's how...**

<b>Join us</b>	The Institution of Mechanical Engineers is the home of Medical Engineering in the UK. Become a member and subscribe to the Engineering in Medicine and Health Division (EMHD) to receive regular updates about events, new journals, and to receive our newsletter. Application forms are available online at <b><a href="http://www.imeche.org/membership">www.imeche.org/membership</a></b>
<b>Newsletter</b>	The EMHD produce a quarterly newsletter detailing the activities of the MED Board as well as new pieces of research and documentation. To get involved, either by contributing or signing up to the mailing list please contact <b><a href="mailto:medical@imeche.org">medical@imeche.org</a></b>
<b>MED Board</b>	The EMHD Board members include company directors, distinguished professors, senior engineers and managers, and consultants, who organise and lead events arising from the latest research developments. For more information or to indicate topics of interest to you email <b><a href="mailto:medical@imeche.org">medical@imeche.org</a></b>
<b>Events</b>	The EMHD Board runs a series of exciting events, examining key areas of concern and research. Major regular international conferences include orthopaedics and incontinence. For full details of EMHD events, please visit <b><a href="http://www.imeche.org/industries/medical/events">www.imeche.org/industries/medical/events</a></b> or contact <b><a href="mailto:medical@imeche.org">medical@imeche.org</a></b>
<b>Student Project Competition</b>	Every year the EMHD Board organises a Student Project Competition, giving entrants the chance to win up to £750 with top industry leaders as judges. This is part of the Medical Extravaganza that also involves an industry and academic exhibition, and the prestigious Smith & Nephew lecture. This is the foremost medical competition in the UK - to find out more visit <b><a href="http://www.medprize.org">www.medprize.org</a></b>
<b>Journals</b>	The EMHD support both the hugely successful 'Journal of Engineering in Medicine' and the brand new 'Journal of Sports Engineering and Technology'. To subscribe or for a free sample copy of either journal please contact <b><a href="mailto:marketing@pepublishing.com">marketing@pepublishing.com</a></b>
<b>Website</b>	To see EMHD events, news, and the latest information and research at <b><a href="http://www.imeche.org/industries/medical">www.imeche.org/industries/medical</a></b>
<b>Feedback</b>	We are always keen to receive feedback on our services. Maybe you would like to suggest a subject area for an event? We are here to help you. To get in touch please email <b><a href="mailto:medical@imeche.org">medical@imeche.org</a></b>

To find out more, visit **[www.imeche.org/industries/medical](http://www.imeche.org/industries/medical)**  
Please email your enquires to **[medical@imeche.org](mailto:medical@imeche.org)**

Alternatively, you can telephone:  
Amy Hurlstone on +44 (0)20 7304 6829  
Diane Lorenzelli on +44 (0)20 7304 6966  
We look forward to hearing from you.